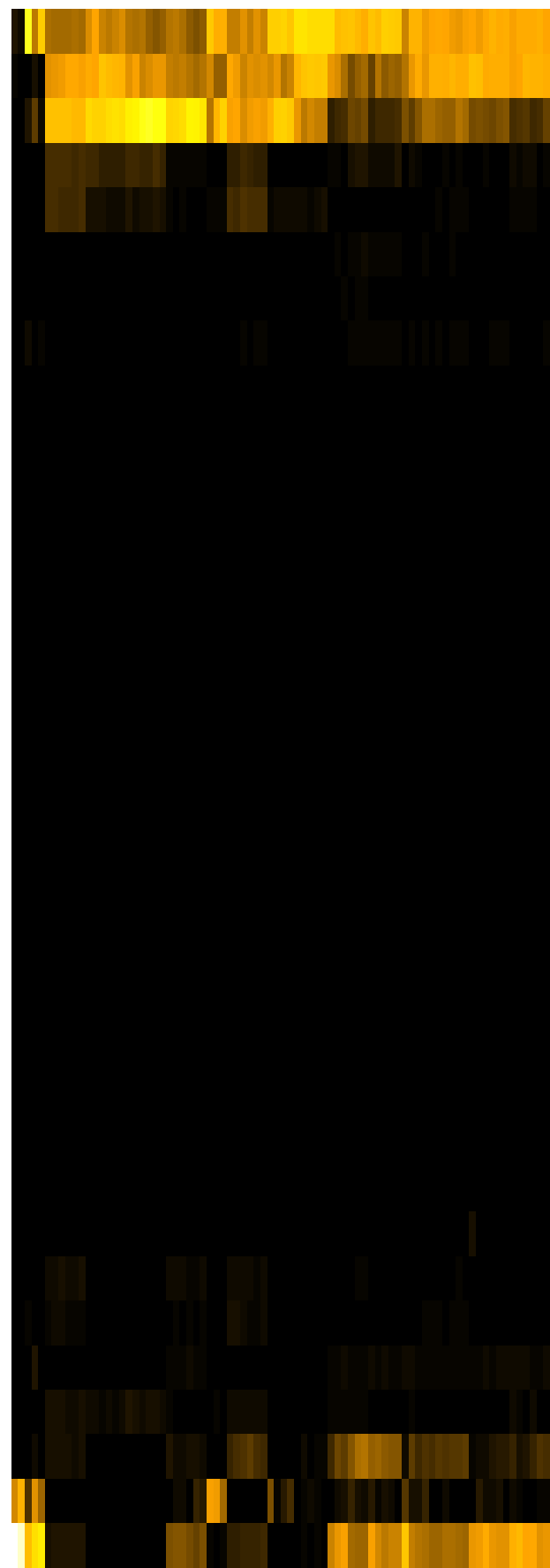
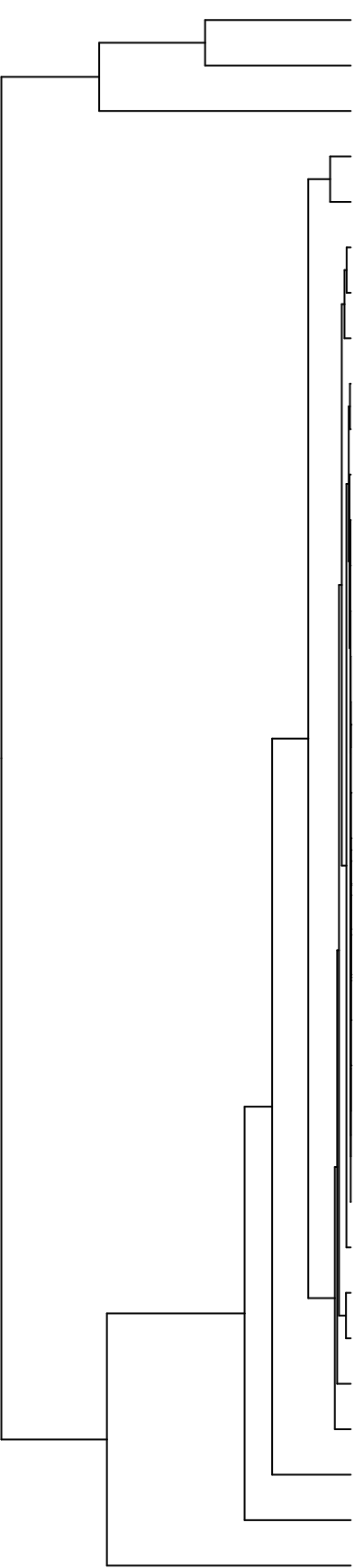


Group005  
 Baseline  
 Final A -PMA



- Veillonellaceae
- Pasteurellaceae
- Neisseriaceae
- Campylobacteraceae
- Porphyromonadaceae
- Leptotrichiaceae
- Lachnospiraceae
- Actinomycetaceae
- Erysipelotrichaceae
- Saccharibacteria\_(TM7)\_[F-1]
- Burkholderiaceae
- Atopobiaceae
- Absconditabacteria\_(SR1)\_[F-1]
- Flavobacteriaceae
- Staphylococcaceae
- Sphingomonadaceae
- Moraxellaceae
- Mycobacteriaceae
- Pseudomonadaceae
- Comamonadaceae
- Microbacteriaceae
- Hymenobacteraceae
- Saccharibacteria\_(TM7)\_[F-2]
- Rhizobiaceae
- Propionibacteriaceae
- Phyllobacteriaceae
- Weeksellaceae
- Yersiniaceae
- Gemellaceae
- Micrococcaceae
- Carnobacteriaceae
- Prevotellaceae
- Fusobacteriaceae
- Enterobacteriaceae
- Streptococcaceae

- F28914.S096
- F28914.S093
- F28914.S094
- F28914.S040
- F28914.S039
- F28914.S038
- F28914.S067
- F28914.S069
- F28914.S068
- F28914.S044
- F28914.S046
- F28914.S045
- F28914.S030
- F28914.S028
- F28914.S025
- F28914.S033
- F28914.S066
- F28914.S061
- F28914.S036
- F28914.S034
- F28914.S055
- F28914.S050
- F28914.S077
- F28914.S053
- F28914.S059
- F28914.S059
- F28914.S060
- F28914.S075
- F28914.S233
- F28914.S235
- F28914.S049
- F28914.S054
- F28914.S073
- F28914.S077
- F28914.S238
- F28914.S080
- F28914.S079
- F28914.S239

Family

Samples